

Safe transport and journeys at work

A part of the sustainability and health/safety practices
in companies, organisations and authorities

Hanna Wennberg, Swedish Transport Administration

Kommunal arbetaren ARTIKLIT Länkelän Val soas Ny på jobbet

Arbetsmiljö Bilolyckor i hemtjänsten

BILOLYCKOR I HEMTJÄNSTEN ÖKAR – TUSEN ANSTÄLLDA HAR SKADATS

Hemtjänstpersonal är oftare inblandad i trafikolyckor än bussförare och taxichaufförer. På tio år har antalet olyckor med personskador nästan fördubblats, visar KA:s granskning. För undersköterskan Marilena Stelea kunde en vanlig arbetsdag i november blivit hennes sista.

Helena Gunnarsson | Verónica Josefsson | 21 FEB 2022



In home care, 25% of the working day is spent driving between clients.

svt NYHETER Nyheter Lokalt Sport SVT Play Barn Tv-tablå Alla program Om SVT

SKÅNE



Flera personer fördes till sjukhus efter att Skåneexpressens buss på väg till Lund åkt i diket på E22:an söder om Hörby fredagen den 3 februari. Arkivbild. Foto: Johan Nilsson/TT

Utredning visar: Busschauffören körde för fort på halt väglag

UPPDATERAD 21 FEBRUARI 2023 PUBLICERAD 20 FEBRUARI 2023

BYGGNADS arbetaren NYHETER ARBETSMILJÖ ÅRETS BYGGMÄSS 2021 BLOGG VERKTYG QUIZ OM OSS SITTFRÅGA

En rullande dödsfälla: "Otroligt nära att spetsas av takjärnet"

Byggnadsarbetare lever farligt, dör och skadas i sina hantverkarbilar. Nu höjs röster för att fordonens grundsäkerhet måste bli bättre. – Annars riskerar våra bilar att bli dödsfällor, säger vvs-montören Patrik, som har överlevt två allvarliga krockar.

ARBETSMILJÖ • 7 JUNI KL 09:50

[Dela](#) [Tweeta](#) [Mejla](#)



Det har gått två år

BYGGNADS arbetaren NYHETER ARBETSMILJÖ ÅRTAL 2023 BLOGG VERKTYG QUIZ OM OSS SITTFRÅGA

Anställda på Skanska i svår trafikolycka – två döda

Två anställda på Skanska omkom igår efter en allvarlig trafikolycka. Ytterligare två i bilen skadades allvarligt.

OLYCKOR • 6 DECEMBER 2022 KL 09:12

[Dela](#) [Tweeta](#) [Mejla](#)



Tre Skanskamedarbetare har nu omkommit efter trafikolyckan i början av december. Foto: Johan Nilsson/TT

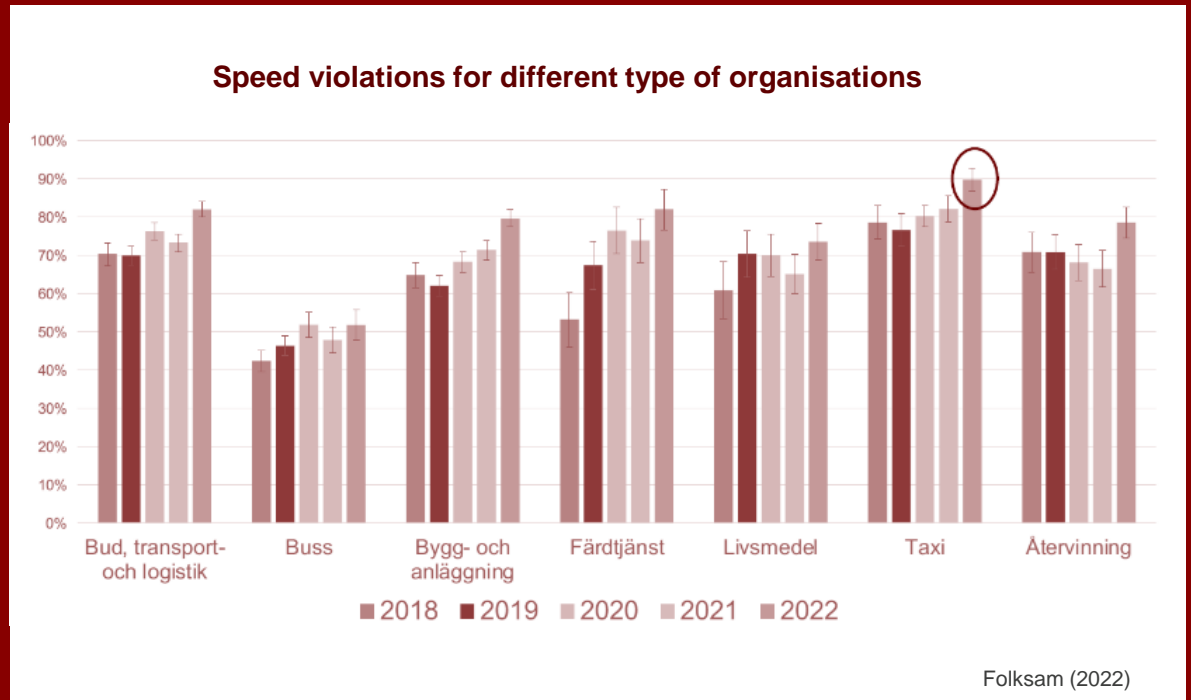
All organisations influence traffic safety



45% of the fatal accidents in road traffic in Sweden are work-related – and 36% involve a procured transport service.

Kullgren et al (2022)

All organisations influence traffic safety



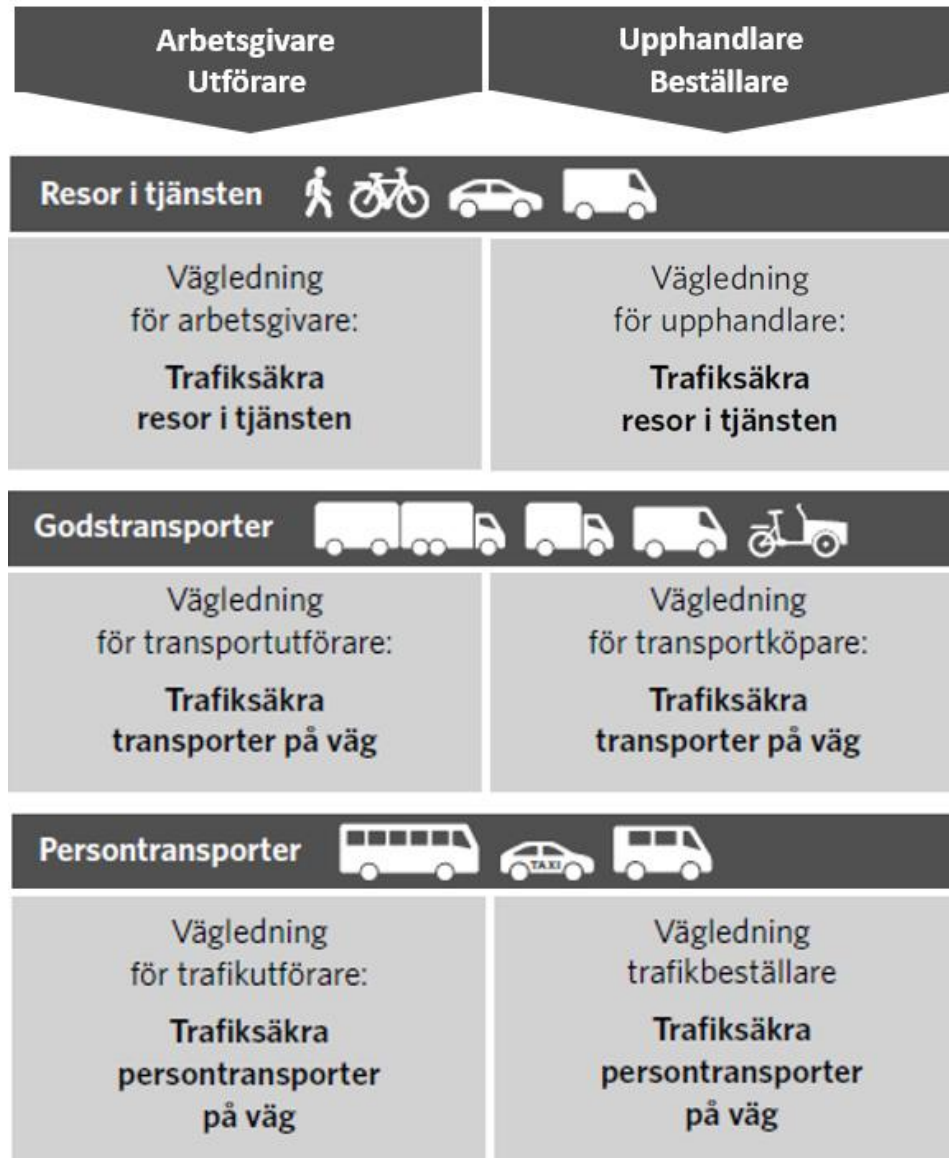
Sustainability and safe working environment



Several positive synergies for the organisation.
More sustainable businesses in every way.



Guidelines for employers and procurers to ensure traffic safety

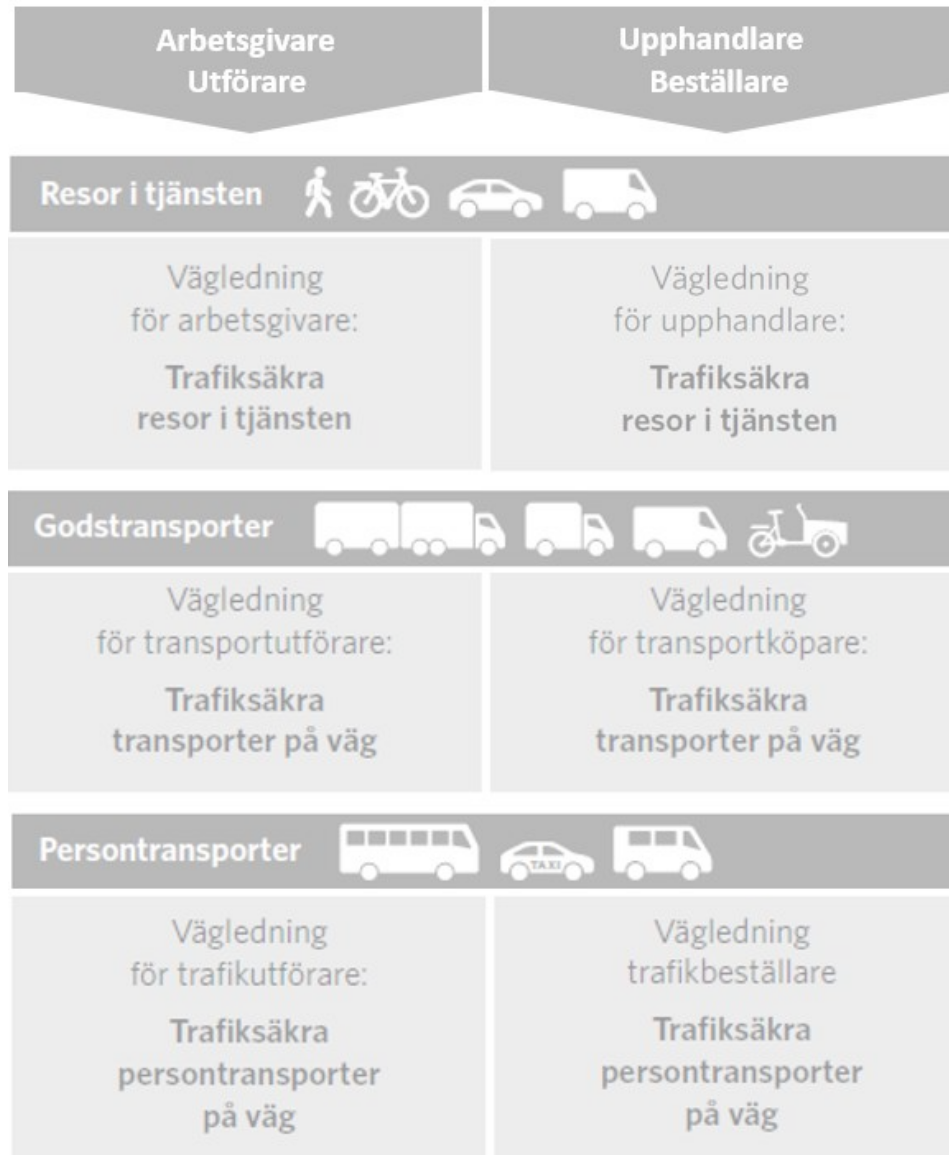


Guidelines for employers and procurers to ensure traffic safety

why?

what?

how?



what?

Preconditions

Vehicle

**Driver and
driving
behaviour**

Passengers

Speed compliance

Influence of alcohol and drugs

Seat belt use

Fatigue and distraction

Safe loading/unloading

what?

Speed compliance

Policy

Routines and
safety culture

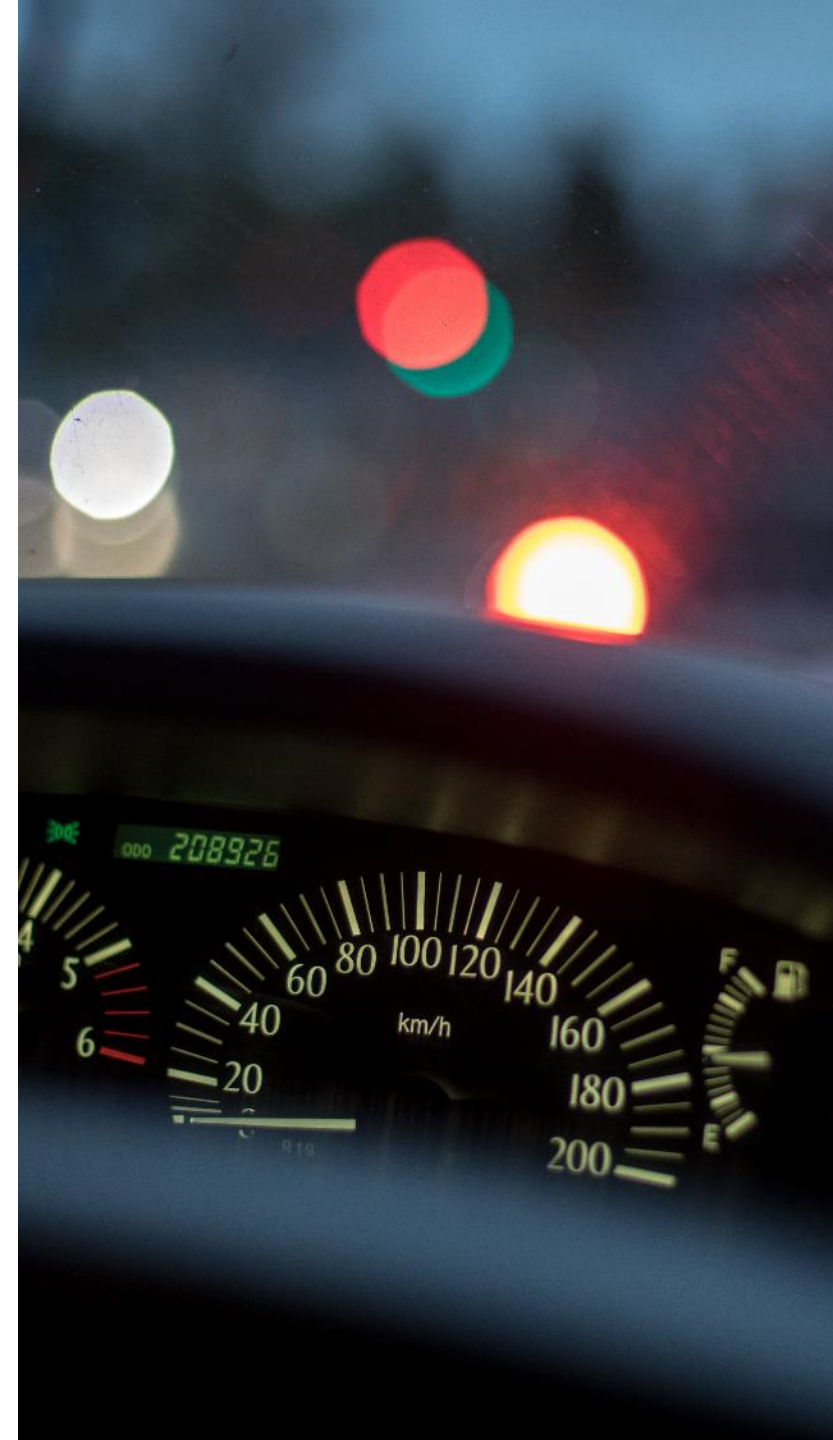
Driver support
in vehicles

Examples of requirements that the procurer can set:

Reporting speed deviations

Requirement: The contractor must report monthly deviations in speed compliance for the vehicles used in the assignment. Follow-up must take place on an aggregated level and in accordance with the data protection regulation. Description of measures for handling deviations must be included.

Follow-up: Monthly reporting of deviations according to requirements. Examples of deviations to be reported: total mileage during the period as well as the proportion of the mileage with speed violations of 0–5 km/h, 5–10 km/h and so on.



what?

Influence of alcohol and drugs

Alcohol and
drug policy

Alcolock in
the vehicles

Methods and
routines

Examples of requirements that the procurer can set:

Alcolock

Requirement: The company's vehicles must be equipped with alcohol locks. Alcohol locks must be tested and approved according to current standards (SS EN 50436-2, utg 2:2014 och SS EN 50436-1, utg 2:2014).

Follow-up: Data on alcolocks are included in vehicle lists of all vehicles used for the assignment. For the alcohol locks, an approved test certificate from an impartial laboratory accredited for the task is required. *See the guidelines for follow-up during the contract period.*



how?

Systematic way of working

Systematic
traffic safety
work

Systematic work
environment
management

Sustainability
practises and
reporting

Examples of requirements that the procurer can set:

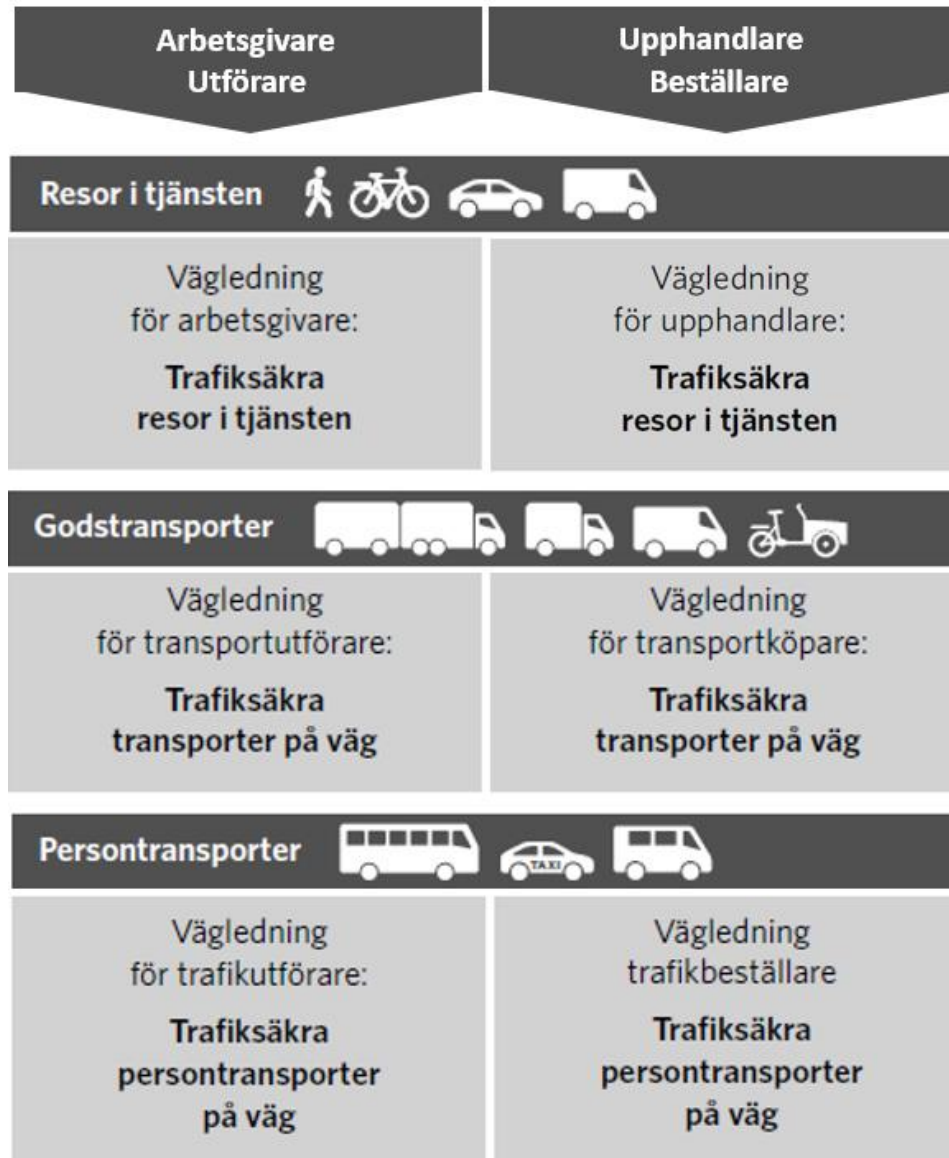
Systematic traffic safety work / certification

Requirements: The contractor must have a management system for traffic safety that meets the requirements of ISO 39001 or equivalent and which is certified by an independent third party accredited for certification according to ISO 39001 or equivalent. Management system for traffic safety must be certified and in operation at the latest at the start of the assignment.

Follow-up: Requirement must be substantiated with a valid certificate (or proof of equivalence). In the case of a renewed certificate, it must be served on the client.



Guidelines for employers and procurers to ensure traffic safety



Message adapted to the target group

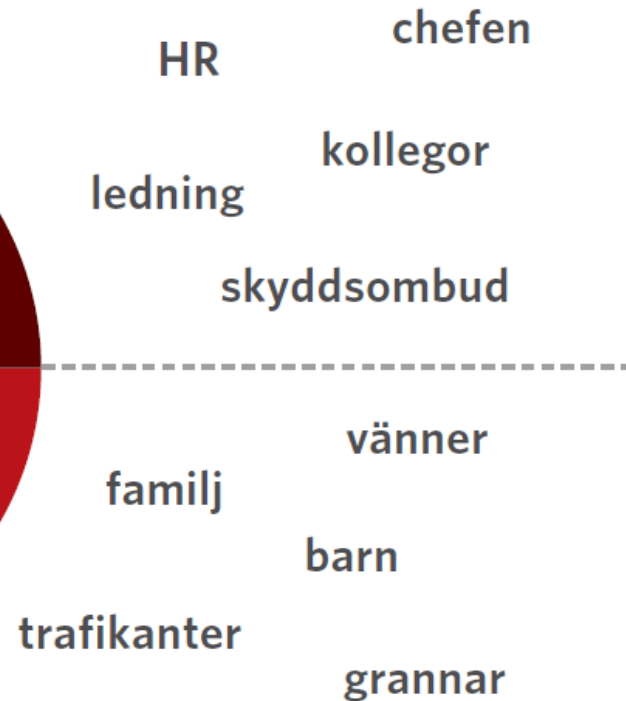
	Requirements for purchasing and procurement	Systematic traffic safety work	Journeys at work / Travel policy	Systematic work environment management	Sustainability practises and reporting
Employer Journeys at work	●	●	●	●	●
Transport operators (goods, person) (Employer)	●	●	●	●	●
Transport purchaser (goods, person)	●				●

From the individual to management level

Employers and purchasers

FÖRUTSÄTTNINGAR

- policy och riktlinjer
- arbetsätt och rutiner
- tidscheman
- förarstöd i fordon



The guidance material will be
available in the end of October:

<https://bransch.trafikverket.se/trafiksakra-verksamheten>

Hanna Wennberg

hanna.wennberg@trafikverket.se

+46 10 123 97 16